

Working with Communities

Thursday 15th October 2015

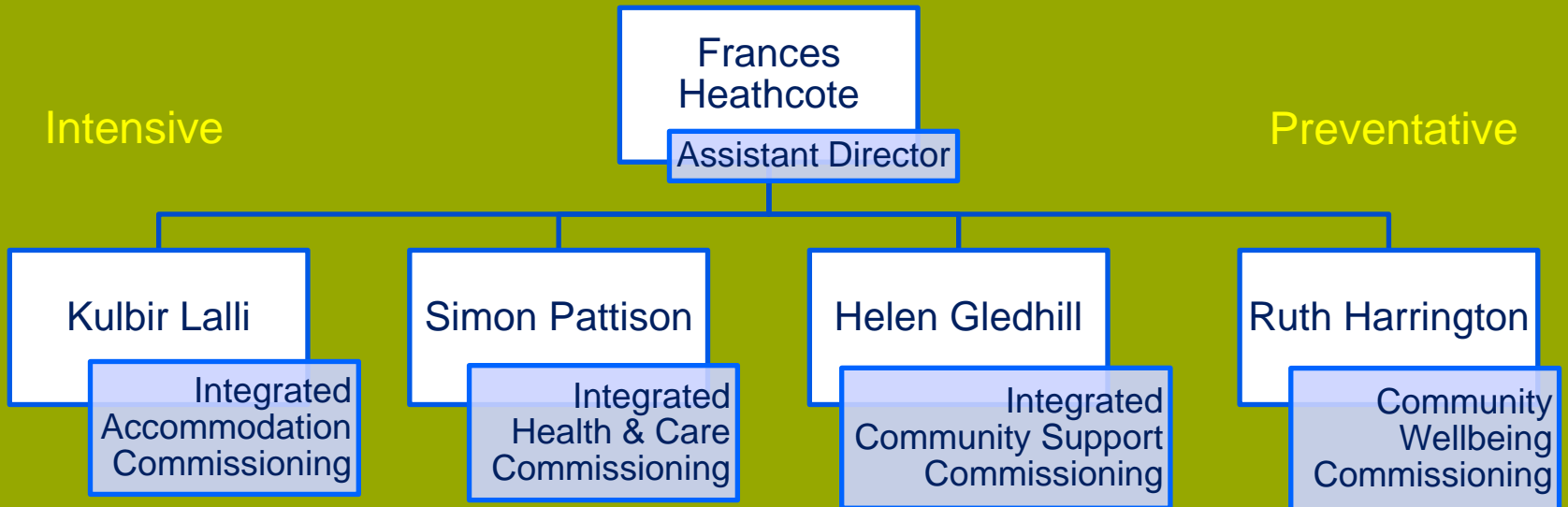
Ruth Harrington - Head of Community Wellbeing Commissioning

Ruth Horne – HertsHelp

Lyndsey Woods – HCPA/Smile network

Herts Mind Network

Adult Joint Commissioning



CWB – Preventative services

Themes			
Supporting Carers Tim Napper	Promoting Mental Health & Emotional Wellbeing Louis Sanford	Information, Advice & Advocacy Susan Carter	Keeping People out of Hospital Susan Carter
Tenders: Parent Carers Specialist carers services for conditions and cultures	Tenders: Counselling complimentary to IAPT Complex Needs Community based recovery & employment activities	Tenders: Advocacy Brokerage & Direct Payments service Crisis Intervention inc. MAU	Tenders: Home & Hospital Discharge East & North Home & Hospital Discharge West
Reducing Social Isolation & Independent Living Daisy Sanghera	Staying Active Kim Ho	Connecting Communities Tim Napper	Living Well with Long Term Conditions Matt Pierce
Tenders: Countywide Befriending Lunch Clubs- Friendship Groups – Self sustainable user led groups	Tenders: Herts Sports Partnership Physical Activity	Tenders: Support for Small Organisations Countywide Volunteering & Timebanks	Tenders: Dementia Sensory services Neurological Conditions

Top Tips for Tendering

- Make the link between what you do and statutory priorities
- Build relationships with partners & commissioners
- Have a simple delivery structure
- Collaborate
- Be passionate



*East and North Hertfordshire
Clinical Commissioning Group*



*Herts Valleys
Clinical Commissioning Group*



HertsHelp

- Telephone Helpline
- Makes the link to all voluntary and community organisations and activities across Hertfordshire
- Community Directory on HertsDirect
- Ruth Horne- network Co-ordinator



*East and North Hertfordshire
Clinical Commissioning Group*



*Herts Valleys
Clinical Commissioning Group*



HCPA & SMILE

- Hertfordshire Care Providers Association
- Provides support and training to Health and Care organisations (private and voluntary)
- Promotes good practise eg. activity



*East and North Hertfordshire
Clinical Commissioning Group*



*Herts Valleys
Clinical Commissioning Group*



Herts Mind Network

- Community organisation linked in with local artists and musicians
- Example of impact on individuals
- Measuring outcomes?



*East and North Hertfordshire
Clinical Commissioning Group*



*Herts Valleys
Clinical Commissioning Group*



Share & Discussion

- What do you do that could be commissioned?
- What links do you already have?
- What links could you make?
- What could be done (by HCC, HertsHelp & HCPA) to make this easier for you?
- What are your next steps from here?



*East and North Hertfordshire
Clinical Commissioning Group*



*Herts Valleys
Clinical Commissioning Group*

